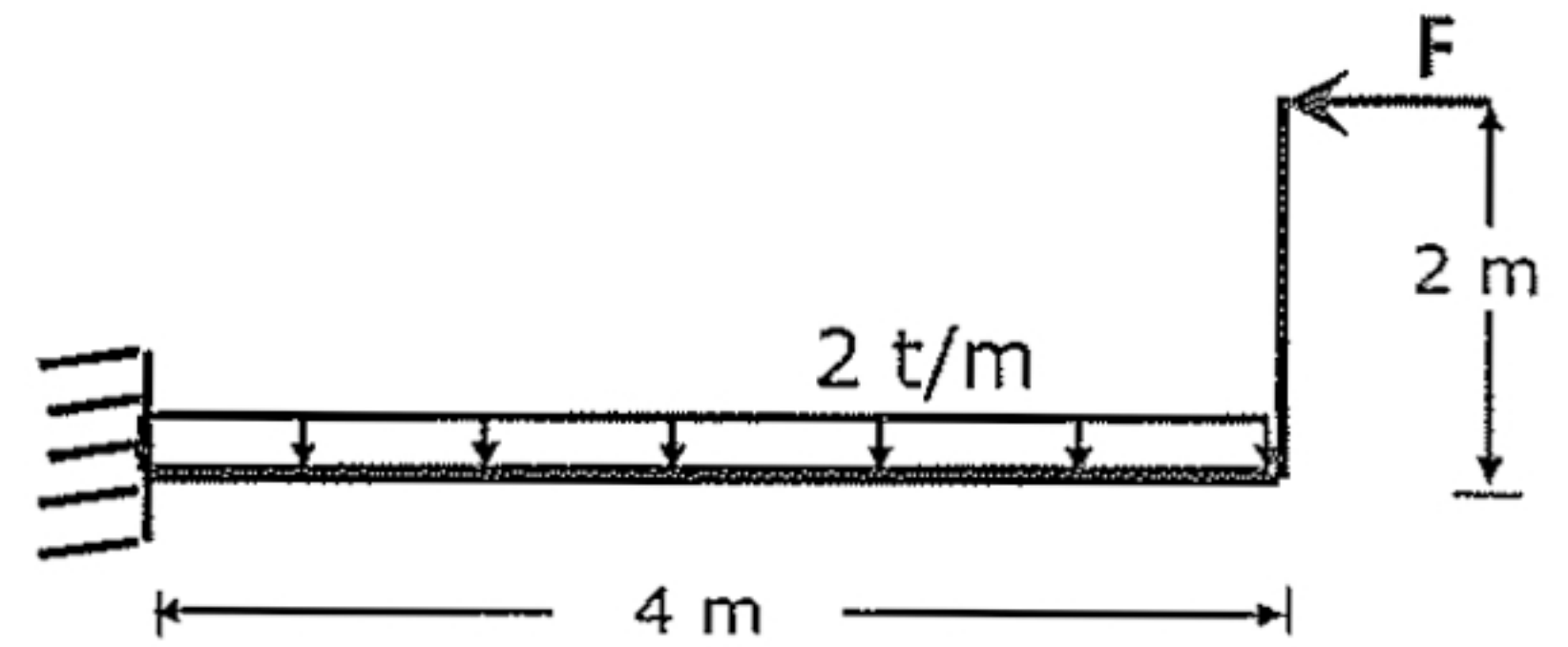


Answer the following questions, and assume any missing data.

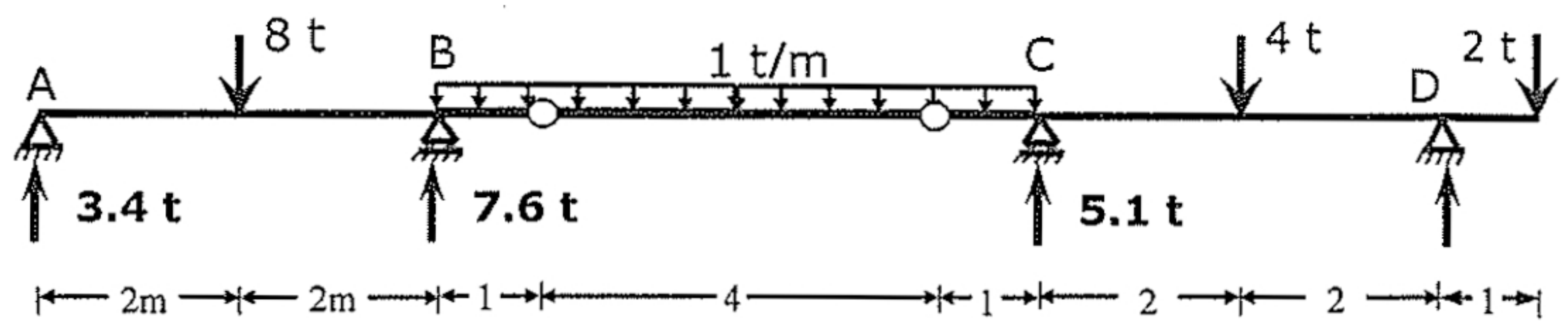
Q 1 (7 degree)

- Calculate the force (F) such that the Max. +ve B.M. = Max. -ve B.M.
- Draw the internal forces diagrams.



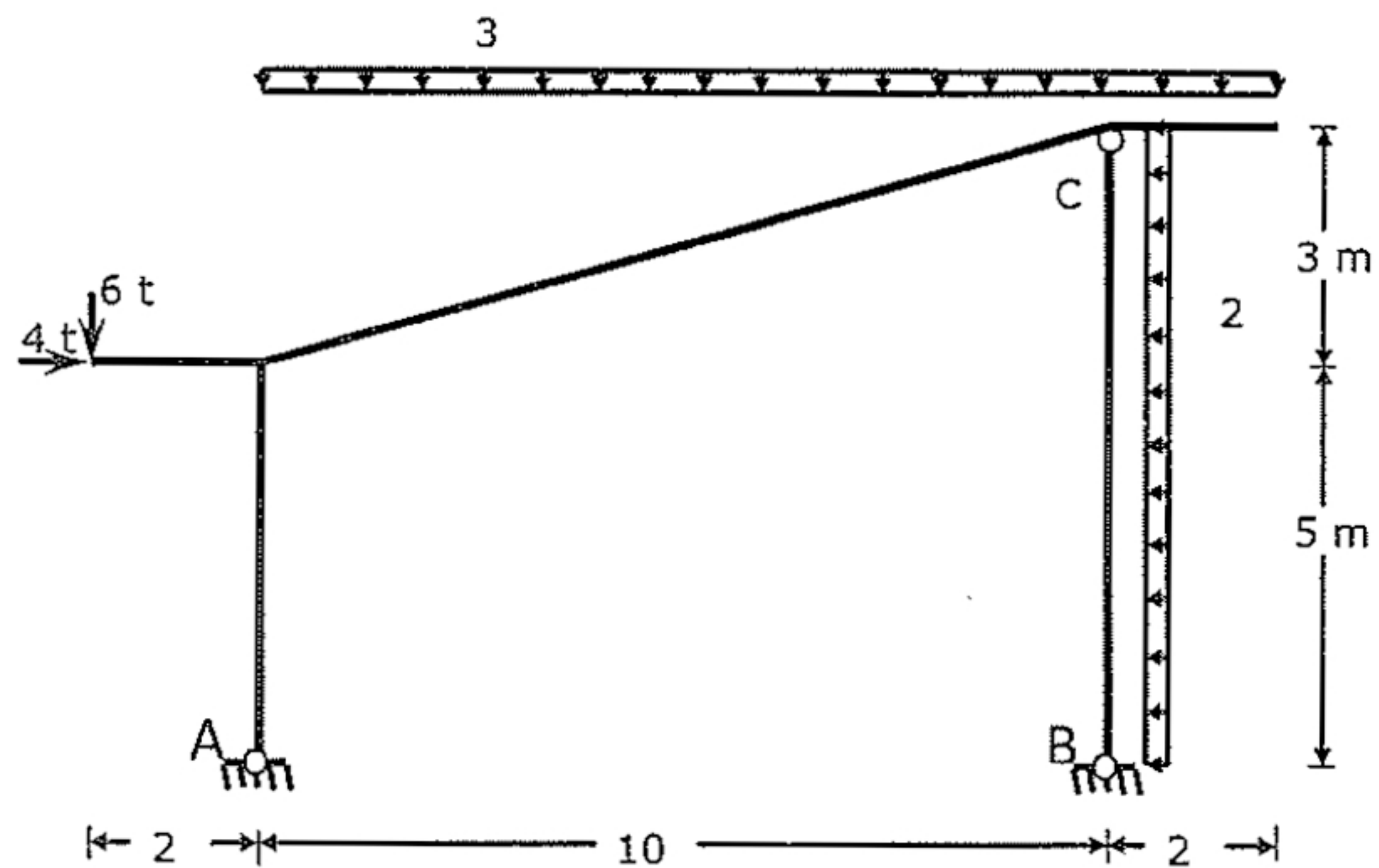
Q 2 (10 degree)

Draw the internal forces diagrams for the shown beam.



Q 3 (10 degree)

For the shown three hinged frame, draw the normal force, shearing force, and bending moment diagrams.



Q 4 (8 degree)

Find the forces in the marked members for the shown truss.

