

[ILOs: a1, a2, b2, b3, b4]

Do NOT use a scientific calculator!

Problem 1: (10 Marks)

Calculate the following:

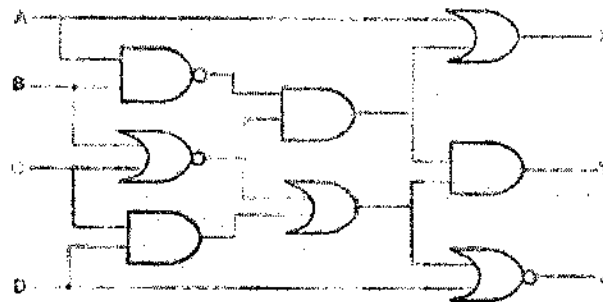
- a) Explain how to convert the following **binary** numbers to the **decimal** numbers
 a) 11010.11 b) 0.11001 c) 1000001 (6 Marks)
- b) Explain how to convert the following **decimal** numbers to the **binary** numbers
 a) 0.25 b) 84 c) 47.40625 (6 Marks)

Problem 2: (20 Marks)

(a) Obtain W from the truth table in the Sum Of Products (SOP) form. Draw the logical circuit to implement it. Then, Simplify the logical expression W and Draw the logical circuit to implement it after simplification. (8 Marks)

A	B	C	W
0	0	0	0
0	0	1	1
0	1	0	1
0	1	1	1
1	0	0	0
1	0	1	1
1	1	0	1
1	1	1	0

(b) What is the output of the following circuit for the binary inputs? (6 Marks)



Explain how to choose the correct answer for the following questions:

- (c) The Boolean function $Y = AB + CD$ is to be realized using only 2 input NAND gates. The minimum number of gates required is: (3 Marks)
 (a) 2 (b) 3 (c) 4 (d) 5
- (d) Minimum number of 2 input NAND gates required to implement the function, $F = (\bar{X} + \bar{Y})(Z + W)$ is: (3 Marks)
 (a) 3 (b) 4 (c) 5 (d) 6

<< Software Part >>

Answer ALL the following questions:

Question 3 (10 Marks)

- (a) There are two main types of memories for storing data in computer. Mention with examples.
- (b) Mention different types of software. Give an example of each.
- (c) What are the levels of programming languages?
- (d) Mention different types of viruses that affect the PC. How can they affect the computer?
- (e) What HTML stands for? Mention the main elements of HTML page
- (f) Write the main format of the `<div>` tag statement.
- (g) Write the basic code of the anchor tag `<a>` to pointer to Google webpage.
- (h) In webpage design, we study two different types of URLs. Mention them with examples.

Question 4 (10 Marks)

A. Confirm if the following sentences are Right or Wrong : (10 of 20 Marks)

- 1- Any Game software is an application program.
- 2- The `<div>` tags are used to design the Webpage Layout.
- 3- Cache memory is one of the primary storage memory.
- 4- The CSS page used to create the Website.
- 5- Touch-Pad is one of the famous memory devices.
- 6- CD-ROM device can hold more data than DVD device.
- 7- To pointer to any another html page, we must use "Add Hyperlink" option.
- 8- ALU is the part of the computer performs the arithmetic calculations.
- 9- The steps to "attach a CSS page" to a certain HTML page is "create new site".
- 10- One of the steps of adding an image to a website is "attach hyperlink".
- 11- Smart Cards is one of the secondary memory device.
- 12- A URL is an address that specifies a protocol, web server, and file path.
- 13- Android software is one of the system software.
- 14- One of the steps of adding video to a website is attach dynamic page
- 15- To add hyperlinks to the website, we need to write `<div>` tag.
- 16- One of the pages supported by Web Expression 4 is XML.
- 17- Antivirus software can be infected (يُصاب) by a virus.
- 18- Webpage " `.dwt` " stands for a Dynamic web Template
- 19- If a computer is described to have 512 Mbytes of memory, it refers to ROM memory.
- 20- Internet is a good media for preventing viruses.
- 21- We must use "Add Hyperlink" option to pointer to any another html page.
- 22- In Software Copyright Issue, the Shareware software means trial period software.

B. Choose the suitable answer: (10 of 20 Marks)

- [1] `GH-yahoo ` , is the basic code of Hyperlink.
A) Google B) Yahoo C) YouTube D) Facebook
- [2] Removing Unused Programs refers to -----
A) Defragment B) Uninstall a program C) Recovery D) Back up
- [3] Anti-virus is ----- program.
A) virus B) application C) hardware D) operating systems
- [4] Computer architecture depends on -----
A) hardware B) software C) user D) All the previous
- [5] Which storage device cannot be erased?
A) CD-ROM B) Floppy disk C) Magnetic tape D) Hard Disk
- [6] What unit is used to measure the speed of a CPU?
A) MHZ B) MB C) KB D) Bit
- [7] One of the steps of adding an video to a website is
A) insert->Media B) insert->picture C) attach dynamic page D) Attach Style Sheet
- [8] page is a page type of MS expression web.
A) CSS B) HTML C) PHP D) All the previous
- [9] The contents of these chips are lost when the computer is switched off.
A) DRAM chips B) ROM chips C) RAM chips D) Cash Memory
- [10] ----- means *frees up space* on your hard disk drive.
A) Back up B) Recovery C) Disk Cleanup D) Format
- [11] To write the main title of your special webpage, you use the tag
A) `..` B) `<a>..` C) `<title>..</title>` D) `<div>..</div>`
- [12] ----- some common operating systems.
A) Windows B) Dos C) UNIX D) All the previous

The previous question is Continued :

- [13] In Software Copyright & Law, the Freeware software means downloaded -----
A) fully free B) free trial period C) not free D) Not of the previous
- [14] One of the two types of URLs used is
A) Absolute B) picture C) dynamic page D) Not of the previous
- [15] Information security covers protection *against* ----- to protect computer from failure.
A) viruses & hackers B) passwords C) Laws D) Not of the previous
- [16] ----- must be considered to achieve (يحقق) Information security of computer.
A) Secure password B) Using UPS C) Shutdown D) All the previous
- [17] Restore an image for my operating system with all its contents refers to -----
A) Backup B) Recovery C) Clean Up D) Format
- [18] One of the steps of adding an image to a website is
A) insert->hyperlink B) insert->picture C) attach dynamic page D) Attach Style Sheet
- [19] Touch Screen (in ATM machine) is an ----- device.
A) Memory B) Input/ Output C) Input D) Not of the previous
- [20] One of the famous *supercomputer* operating systems is -----
A) Windows B) Dos C) Android D) Linux
- [21] To create a Google Search box in our web page, we must first create
A) Video B) Hyperlink C) Style Sheet page D) dynamic page
- [22] The <div> tags are written only inside part of the HTML page.
A) title B) head C) footer D) body

With Best wishes

Dr Abdelfatah Heliel
Faculty of Engineering
(Computer & Control Dept.)

Dr. Ghada Hamisa
Faculty of Engineering
(Computer & Control Dept.)