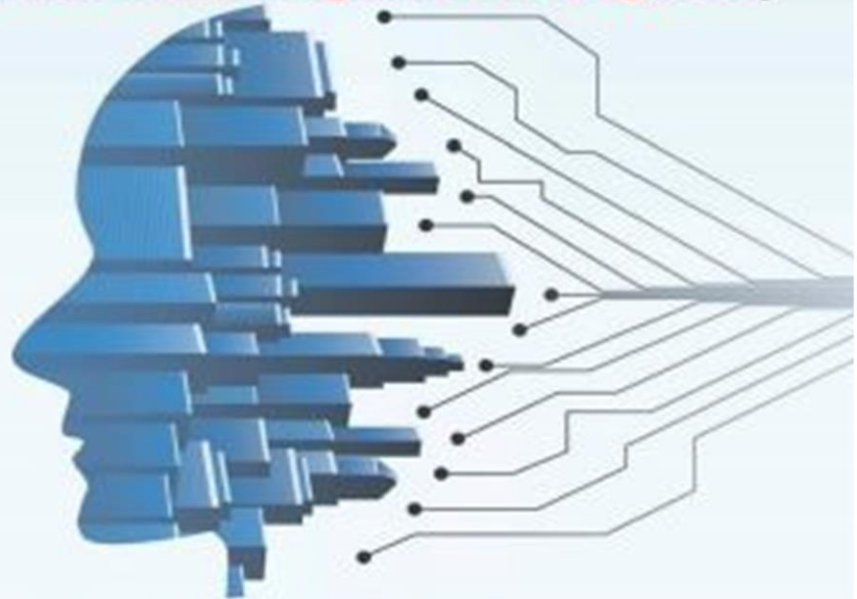




اللائحة الاكاديمية لمرحلة
بكالوريوس علوم الذكاء الاصطناعي
(برنامج الذكاء الاصطناعي الحيوي)
(Bio-Artificial Intelligence Program)



بنظام الساعات المعتمدة

Credit Hours Systems

برنامج مميز بمصروفات

جامعة كفر الشيخ
كلية الذكاء الاصطناعي

2021 / 2020

Items of the regulation

introduction

The Faculty of artificial Intelligence at Kafr ElSheikh University seeks to keep up with the tremendous development in all educational and technical fields,soI care The College has developeddistinguished educational programs that keep pace with the enormous revolution in the fields of artificial intelligence, inline with the vision and direction of the State and university bringing together smart systems to solve problems that confront society and serve both the individual and the citizen. Since at Kafr ElSheikh University had the lead in establishing the first Faculty of artificial Intelligence In Egypt and the Middle East, special programs had to be prepared that serve the citizen in all fields, especially in the Bio-field using artificial intelligence software to qualify graduates for competition in the labor market.

Bio-artificial intelligence can be defined as a "set of Technology-enabled software and hardware that used Artificial intelligence in biomedical, which differs fromtraditional medical informatics in that it uses intelligence techniques In the field of biomedical and health care, since they are hardware and software can adapt quickly and simulate human mental abilities.”

The following is a review of the vision and mission of the faculty of artificial Intelligence:

Faculty of artificial Intelligence vision

The Faculty of artificial Intelligence in Kafr El-Sheikh University seeks to support excellence in Egypt and provide the state institutions with knowledge to reinforce the economic growth and improve the Egyptians' lives.

Faculty of artificial Intelligence mission

1. Support the country's efforts to build and sustain AI-based innovation, growth, and productivity in Egypt by focusing on transformation efforts for deep learning and machine learning.
2. Supporting the industrial and business sectors in Egypt with human cadres with artificial intelligence skills
3. Supporting Egypt's innovation sector in artificial intelligence and assist startups in growing to be Egyptian companies capable of international excellence.

Item 1 Vision, mission, objectives and the specifications of the graduates

A. Program Vision:

A studying program to prepare distinguished graduates in the field of bio-artificial intelligence with a global quality level which graduates can compete in the labor market in the field of health care and bio-AI software

B. Program mission:

Preparing professional graduates qualified with the latest concepts of bio-artificial intelligence that enable them to contribute to the development of biosystems at the local and global level through the provision of professional-level bio-artificial intelligence services and the active participation in scientific research through research centers and universities to serve the community.

C. Program objectives:

1. Providing the necessary and modern foundations for undergraduate students using theory and application in the sciences of biological artificial intelligence.
2. Providing students with a strong scientific base enhanced by training and practical experience in the sciences of biological artificial intelligence.
3. providing the community with graduates specializing in bio-artificial intelligence field.
4. Develop the student's abilities to participate in practical application and research to serve the community.
5. Adopting the modern technologies that are appropriate to the needs of society.
6. Empowering students with the tools and skills necessary to provide an effective service for the manufacture of smart systems based on bio-artificial intelligence that keep pace with the needs of society after graduation.
7. Providing consultations and community services in the field of bio artificial intelligence to those who need such services.
8. Encouraging innovative ideas and projects by faculty and department students.
9. Creating an attractive learning environment by providing the necessary opportunities for different activities such as social and sports activities.

D. Program graduate specifications:

1. To be specialized and qualified with theoretical foundations and applied methodologies in the field of bio-artificial intelligence.
2. To be able to compete locally and internationally and keep pace with the ongoing development of the bio-artificial intelligence software industry.
3. To be able to keep pace with the requirements of the local and international labor market.
4. To contribute to the advancement of society and the development of intelligent systems and environments capable of solving the problems faced by society.
5. To be able to conduct scientific studies and Applied research in the area of bio-artificial intelligence, especially that have a direct impact on integrated development in society.

6. To have all the intellectual and cultural skills enumerate intelligent applications and work systems in the field of bio-artificial intelligence.

E. working area for Graduates:

1. In hospitals.
2. In integrated health care areas in hospitals and laboratories.
3. In vital information technology centers.
4. In bio-artificial intelligence software development centers.
5. In smart departments in most government and private institutions.
6. In the field of biological scientific research centers and laboratories.
7. In academics and research institutes in the bio artificial intelligence.
8. At the relevant institutes and universities

This, for example, but it is not limited to the Egypt's vision 2030.

Item (2) Definition of the program:

The Bachelor of Science in artificial Intelligence (biological artificial intelligence specialization) aims to meet the growing needs in Egypt and the world of qualified scientific personnel (cadres) in the disciplines of bio-artificial intelligence. This is done by providing practical, educational and training tools that are subject to continuous improvement and development to keep up with scientific and technological developments. The program also aims to prepare professional cadres and professional graduates in the field of bio-artificial intelligence to meet the requirements of the labor market.

Item (3) The academic degree granted to graduates

On the recommendation of the Council of the Faculty of artificial Intelligence, the Council of the Kafr El-Sheikh University grants a bachelor's degree in artificial intelligence (specialty of bio-artificial intelligence).

Item (4) College admission requirements

The College of Artificial Intelligence accepts students who have obtained a high school either sciences or mathematics through the rules governing the coordination of admission to Egyptian universities, which are set by the Council of Universities and applied by the Office for the Coordination of Admission to Universities to students who obtain high school and equivalent certificates, according to the following: -

- For students obtained the high school in science whom were accepted into the program, them required to pass the supplementary (qualifying) exams for the course (Maths-0) corresponding to the course (Maths 2) of the high school, and For students obtain the high school in mathematics whom were accepted into the program, them required to pass the supplementary (qualifying) exams for the course (Biology-0) corresponding to the high school course (biology) before passing to the second level, and the course fees are calculated as equivalent to three credit hours without calculating actual credit hours and not included in the calculation of the Grade Point Average.
- The transfer of the student to the program from other colleges may be accepted on the condition that the student receives the minimum admission to the sector in the year of obtaining the high school or what is equivalent, based on the Council's decision to obtain the university at its meeting on 2015/7/21 where the transfer is made directly through the university.

Item 5 requirements for Bachelor's degree

These requirements are essential for the student to obtain a Bachelor's degree in artificial intelligence (specialty of bio-artificial intelligence):

- A) The student must successfully pass all courses at a rate of (142) credit hours.
- B) the student will pass the summer training period successfully with (2) credit hours.

- C) the student must successfully pass all courses approved by the university and considered as graduation requirements.
- D) the student must successfully pass all the supplementary courses and these courses are not included in his Grade Point Average

Item (6) Studying System

- The study in the program depends on the credit hour system, the credit hour is a unit of study measurement to determine the weight of the course. A one-hour lecture is equivalent to two, three or four hours of exercises or practical exercises.
- The duration of study in the program is 4 academic years (levels) divided into 8 semesters.
- Teaching in the program is based on the English language, and some courses may be taught in Arabic according to the requirements of each course.
- After taking the opinion of the relevant Council of the Department and depending on the nature of the courses, the College may teach one or more courses or parts of the course in the hybrid mode, which includes 70%-60 face-to-face education and 40-30% online education or any other proportion consistent with The nature of the study for the course, and in order to achieve the desired objectives of teaching the course and program, In all cases, the matter will be presented to the Council of Education and Student Affairs at the university for approval in preparation for submission to the Council of the University for accreditation.

Item 7. Design of the school program (classes)

The course is designed to be learning through theoretical lectures, hands-on lessons, summer training, and presentations in collaboration with the community around the university.

The duration of study in the program is (144) credit hours according to the semester system, The academic year is divided into two main semesters (first and second). Some courses may be offered in the summer semester, as follows:

- The first semester (fall semester) is 16 weeks, inclusive exams and starts in September.
- The second semester (spring semester) is 16 weeks and begins in February (following mid-year leave).
- The summer semester is 8 to 6 weeks and begins in July, and the number of weekly teaching hours to each course is doubling and a maximum of 9 approved hours.

Graduation is at the end of each semester and therefore graduation roles will be as follows:

- Graduation at the end of the second semester (June role).
- Graduation at the end of the summer season (September floor).
- Graduation at the end of the first semester (January).

Item 8. Registration, deletion and addition

- The student registers the courses he/she chooses at the beginning of each semester through the college's website or the application form provided by the college at the times determined by the college's management before the start of the course. The Program's Executive Committee must approve the registration of decisions for students who are late in the second week of the study.

- After consulting with the academic advisor (mentor), the student can delete the course and replace it by registering for another course within the educational burden up to the end of the third week from the time of starting semester in the main semester (first and second).
- The College Council determines the minimum number of students to be registered and enrolled in a course and the conditions under which this course can be opened.
- Upon completion of the registration procedure, a student may delete or add one or more courses within a period of three weeks from the beginning of the semester, in coordination with the student's academic advisor (mentor) and through a specific form provided by the college.
- Students are allowed to study the various courses by register and enrolling at the higher levels (except for the Bachelor's degree project), and the student is enrolled in a higher course if he finished the course prerequisites successfully.
- When the student enrolled in new courses the student must finish the prerequisites of these courses in accordance with the regulation.
- The College Council may, in cases of extreme necessity and after approval by the Executive Committee of the Program, allow the student to register some courses in parallel with their requirements that the student has not successfully completed if the student has less than 12 credit hours. A declaration must be written to the student's guardian that his or her success in this course will not be adopted after he/she has passed the requirement that he/she be allowed to register in parallel.
- The student should complete the course registration form at the specified time according to the university calendar announced for each semester and may not attend school after the registration process.
-

Item 9: Withdrawal from a course

- The student may withdraw from one or more courses after registration in any semester without being considered as fail in this course if he or she applies for the withdrawal within two weeks of the end of the registration according to the university calendar announced for each semester and is monitored "withdrawn" and is included in the calculation of the Grade Point Average rate with the student not recovering the fees.

Item 10: Academic Advising

- Academic advisor: The program coordinator assigns each group of students, upon joining the study and until their graduation, an Academic Advisor from among the faculty members.
- The academic Advisor is committed to following the student's performance and to cooperating in the selection of courses in each class.

Item 11 Attendance and absence

- Studying in the bio artificial intelligence program is systematic regular and affiliation is not permitted.
- the final exam requires that the student achieved an attendance rate of not less than 75% of the lectures and practical and theoretical exercises in each course. If the student's absence – without an acceptable excuse – in one of the courses exceeds 25%, the College Council may deprive him of entering the final exam after warning him three times. The first warning after exceeding 15% of the percentage of absence, the second after exceeding 20% of the absence percentage, and the third after exceeding 25%, for which a “deprivation” is noted and entered into the calculation of the Grade Point Average. But if the student presents an excuse accepted by the College Council, it

will be noted as “withdrawing” and not included in the Grade Point Average calculation, with the student not recovering the fees.

- A student who is absent from the final exam of any course, without an acceptable excuse, will be obtain an "absence" in the course and will be included in the calculation of its Grade Point Average.
- If the student gives an excuse accepted by the College Council for not attending the final exam for any course, he/she will obtain "absence of excuses" in this course and it is not included in the calculation of his semester average.
- The student may attend lectures of a course as a listener, after the approval of the Executive Committee of the Program and the College Council, and be marked in the academic record as (AU).
- A student is considered discontinued if not enrolled in a class or withdrawn from all classroom courses without an acceptable excuse.

Item 12. Discontinuation of the study

- A student is considered discontinued (dropped out) if he/she did not register for a semester or withdrew from all semester courses without an acceptable excuse.

Item 13 Regulations and methods of evaluation

- The final grade consists of the total scores of the different assessment methods for each course with a total of (100) degrees, and the minimum pass for success in any course is 50% of the total marks for this course, and the student is not success in any course unless he/she obtains 30% of the written exam score at the end of the Semester, and if the student obtains less than 30% of the written exam score, he will be given the grade of “Regulation Fail”.

- The following table shows the assessment methods for the courses:

	Courses contains practical (P)	Courses don't contain practical (T)	University courses and cultural and humanitarian Courses (H)
Final Exam	60	60	80
Coursework	20	40	20
Practical Exam	20	-	-
Total	100	100	100

- The items in the preceding table shall apply to the courses under article 26 in accordance with the type of course that set out in P-T-H-G as follows:
 - P: - courses have practical.
 - T: - courses that have no practical.
 - H: - University courses and cultural and humanitarian Courses
 - G: - Graduation Project
- The College Council determines the dates of the mid-term examinations, final exams, and the student is informed before with sufficient time.
- Time of the final exam of any course is two hours.
- After taking the opinion of the competent department Council and depending on the nature of the courses, the faculty may hold the two subjects electronically in one or more courses, and the two courses may be held in all or part of the course to correct it electronically. In all cases, the matter shall be submitted to the University's Education and Student Affairs Council for approval in preparation for submission to the University Council for approval.

Graduation Project:

- The fourth level student will prepare a project that will be graduated in specific subjects determined by the Faculty's department and approved by the Program Executive Committee, and the program executive committee will present the lists of student groups participating in the graduation projects and supervised by a member of the project's specialized academic staff. An additional period of time will be allocated to the project following completion of the second semester examination to discuss the project for each group by the committee of the examiners.
- The graduation project is calculated as a course with a (6) credit hours over two semesters.
- The evaluation of student's graduation project is as follows:
 - 50% of the maximum score is dedicated for project implementation, discussion, in addition to the final presentation, and the evaluation is carried out by a committee of examiners.
 - The second 50% of the scores are divided as follows: 30% for follow up and 20% to produce the final version of the project. This assessment is done by the supervisor.

Evaluation system:

- The college follows the credit hour system, and the basic unit is the academic course not the academic year. The points system is the main assessment for each course, which is determined according to the following table:

The percentage of the degree	Points	Symbol	Grade Average
More than 90%	4	A+	Excellent
From 85% to less than 90%	3.7	A	
From 80% to less than 85%	3.3	B+	Very Good
From 75% to less than 80%	3	B	
From 70% to less than 75%	2.7	C+	Good

From 65% to less than 70%	2.4	C	Pass
From 60% to less than 65%	2.2	D+	
From 50% to less than 60%	2	D	
Less than 50%	0	F	Fail

- Grade Point Average (GPA): It is the average of the points that a student obtained during the semesters and is rounded to the nearest two decimal places, and is calculated as follows:

$$GPA = \frac{\text{sumation of (multiplying the points for each course} \times \text{number of credit hours)}}{\text{Total credit hours}}$$

- Calculation of General Average

The student's Grade Average is calculated based on the Grade Point Average according to the following table:

Grade Point Average	Symbol	Grade Average
More than 3.7	A	Excellent
From 3 to less than 3.7	B	Very Good
From 2.4 to less than 3	C	Good
From 2 to less than 2.4	D	Pass
From 1.5 to less than 2	F	Deficient
less than 1.5	F-	Very Deficient

The student is awarded an honor with grade average if he/she passed all studied courses at each academic level with a grade that is not less than very good with four academic years at most.

Item 14 Failing and Repeating

- If the student is failed in a course, he or she must re-study and exam again. If he succeeds in the course after re-examination, he or she will count the actual grades and his Grade Point Average will be calculated based on this rule.

Item 15 Academic Record

A report showing the student's academic progress, including the courses he/she studied in each semester with their symbols and numbers, number of credit hours, obtained grades, in addition to symbols and values of those grades. The record also shows the semester average, the Grade Point Average and Grade Average, in addition to the exempted courses for the student transferred to the program.

Item 16 registration suspension (cancelation)

After the approval of the College Council, The Executive Committee of the program may suspend the student's enrollment for a period of two consecutive semesters and a maximum of four intermittent semesters during his study period in the program if the student presents an acceptable excuse that prevents him from attending the study. If the student exceeds the maximum limit, he shall pay fees determined by the Executive Committee of the program in accordance with the financial rules of the program and in accordance with the decisions of the University Council.

Item 17 enrolment cancellation

The student's enrollment shall be canceled if he commits a violation of morality or violates the regulations of the college or university, or a disciplinary regulation is applied against him in accordance with the Universities Organizing Law and its executive regulations and decisions of the University Council.

Item 18 Academic stumble

- If the student obtains in any semester - except the semester that follows his admission to the college - a Grade Point Average less than (2.0), an academic probation is send to him stating the necessity of raising the student from his Grade Point Average at least to (2.0), and the student is considered academically stumbled and he must be placed under academic observation During the semester by the academic advisor.

- A student who academically stumbled must raise his Grade Point Average at least to (2.0) with a period of three consecutive semesters at most. A second warning is sent to remind him/her of the last semester if he completed two semesters without reaching the required grade.
- The student that is academically stumbled is not allowed to register for more than (12) credit hours during the semester, with the exception of the graduation semester. In addition to the above, the student is allowed to register for (6) credit hours at most, after the approval of the Executive Committee of the Program and the College Council.

Item 19 studying levels

Study levels are defined as follows:

1. A student who passes from 26 to 29 credit hours at most is considered to be in the first level (the level of the first academic semester).
2. A student who passes between 30 and less than 65 credit hours is considered to be in the second level (the level of the academic semester).
3. A student who passes between 66 to less than 102 credit hours is considered to be in the third level (the level of the third academic semester).
4. A student who passes 102 credit hours or more is considered to be in the fourth level (the level of the fourth academic semester).

Item 20 Cases of Expel

The student shall be Expel according to the chances of failure stipulated in the executive regulations of the Universities Organizing Law as follows:

1. First level students: two years.
2. Second-level students: two years + one exceptional year in the College Council.
3. Third level students: two years + three exceptional years in the college council.
4. Fourth level students: two years + three exceptional years in the College Council.

Item 21 Special Cases Evaluation

Courses in which the student is registered as a listener, or in which success is only required, or if he did not complete them with an excuse accepted by the Executive Committee of the program, so that they are not included in the calculation of the average points (semester and cumulative average) and one of the following estimates is given to them:

case	name	symbol
Withdrawal with an acceptable excuse	Withdraw	W
Attending the course as a listener	Audit	AU
Student that obtained the minimum score for passing the course (50%)	Pass	P
Student that not obtained the minimum score for passing the course (50%)	Fail	F

Item 22 summer training

The student performs a summer training (equivalent to 2 credit hours) during the summer vacation for four weeks at least, in one of the companies or institutions that fit with the program specialty after the approval of the Executive Committee of the program under the supervision of one of the faculty academic members. The student submits to the college a statement of successful completion of the training and a report on what the student has done during the training period to be discussed in oral committees determined by the executive committee of the program in the college.

Item 23 Scholarships

The program executive committee may allocate some scholarships (annually) to a number of outstanding students that decided by the program executive committee and approved by the college council and approved by the university council.

Item 24 Courses Update

It is allowed to update a 20% of the course content at most based on the proposal of the department council after the approval of the College Council and the approval of the University Council after giving the necessary justifications.

Item 25 items not included

Items that are not provided for in this regulation are presented to the University Council to take the necessary action.

Item 26 courses

The courses of the bio-artificial intelligence program has been designed and built in order to provide a high-quality educational environment that contributes to the development of students' abilities at different levels of study, based on clear criteria and standards to achieve the program's objectives, with a focus on applied learning, so that students upon graduation should able to design software and hardware based on the use of artificial intelligence techniques in the biological field to carry out specific tasks with high efficiency and effectiveness. In addition to developing self-assessment and critical thinking skills.

Courses code system:

Courses in the academic program schedules are numbered with a specialty code and three numbers indicated from left to right as follows:

1. The first number from the left represents the academic level in which the course is teach, which is 1 for the first level, 2 for the second level, 3 for the third level, and 4 for the fourth level.
2. The second number from the left represents the semester in which the course is teach. It is 1 for the first semester and 2 for the second semester.
3. The third number from the left represents the course sequence in the academic level and ranges between numbers 1 and 9.

To obtain a bachelor's degree in artificial intelligence, in bio-artificial intelligence specialty, it is required to study 144 credit hours distributed as follows and appropriate with the schedule of NARS:

Course's type	Credit hours	Percentage	NARS Percentage
Humanitarian and social decisions (University Requirements)	12	8.33%	8-10%
Basic mathematics and science courses	23	15.97%	16-18%
Basic Computer Science and Artificial Intelligence Courses	38	26.38%	26-28%
Specialized Courses (Bio Artificial Intelligence)	42	29.16%	28-30%
elective courses	21	14.58%	4-16%
Graduation Project	6	4.16%	3-5%
summer training	2	1.38%	3-5%
Total	144	100%	